

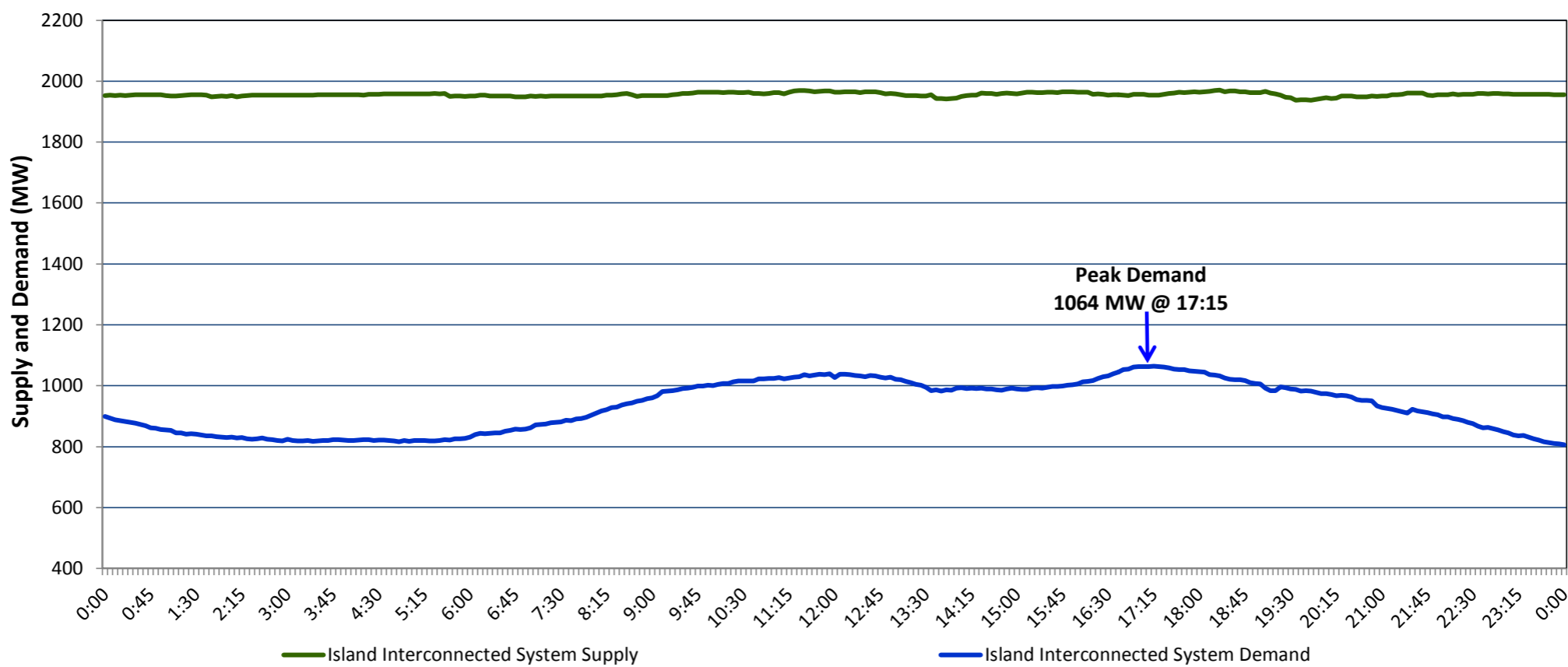
Newfoundland Labrador Hydro (NLH)

Supply and Demand Status Report Filed Monday, January 15, 2018

Section 1

Island Interconnected System Supply and Demand

Actual 24 Hour System Performance For Saturday, January 13, 2018



Supply Notes For January 13, 2018

- 1,2
- AAs of 0739 hours, January 03, 2018, Holyrood Unit 2 available at 154 MW (170 MW).
- BAs of 2115 hours, January 04, 2018, Stephenville Gas Turbine available at 25 MW (50 MW).
- CAs of 0815 hours, January 08, 2018, Holyrood Unit 1 available at 148 MW (170 MW).
- DAs of 2049 hours, January 12, 2018, Holyrood Unit 3 available at 131 MW (150 MW).

Section 2

Island Interconnected Supply and Demand

Sun, Jan 14, 2018Island System Outlook <sup>3</sup>			Seven-Day Forecast		Temperature (°C)		Island System Daily Peak Demand (MW)	
					Morning	Evening	Forecast	Adjusted <sup>7</sup>
Available Island System Supply: <sup>5</sup>	1,940	MW	Sunday, January 14, 2018		10	3	1,310	1,204
NLH Generation: <sup>4</sup>	1,610	MW	Monday, January 15, 2018		-4	-5	1,535	1,426
NLH Power Purchases: <sup>6</sup>	130	MW	Tuesday, January 16, 2018		-4	0	1,525	1,416
Other Island Generation:	200	MW	Wednesday, January 17, 2018		-3	-5	1,515	1,406
Current St. John's Temperature:	9	°C	Thursday, January 18, 2018		-1	1	1,460	1,352
Current St. John's Windchill:	N/A	°C	Friday, January 19, 2018		-2	-5	1,590	1,480
7-Day Island Peak Demand Forecast:	1,590	MW	Saturday, January 20, 2018		-2	-1	1,375	1,268

Supply Notes For January 14, 2018

- 3
- Notes:
1. Generation outages for running and corrective maintenance are included. These are not unusual for power system operations. They generally do not impact customer supply. The power system operators schedule outages to system equipment whenever possible to coincide with periods when customer demands are low and sufficient supply reserves are available. However, from time to time equipment outages are necessary and reserves may be impacted.
2. Due to the Island Interconnected System being isolated from the larger North American grid, when there is a sudden loss of large generating units some customer's load must be interrupted for short periods to bring generation output equal to customer demand. This automatic action of power system protection, referred to as under frequency load shedding, is necessary to ensure the integrity and reliability of system equipment. Under frequency events typically occur 5 to 8 times per year on the Island Interconnected System and the resultant customer load interruptions are generally less than 30 minutes.
3. As of 0800 Hours.
4. Gross output including station service at Holyrood (24.5 MW) and improved NLH hydraulic output due to water levels (35 MW).
5. Gross output from all Island sources (including Note 4).
6. NLH Power Purchases include: CBPP Co-Gen, Nalcor Exploits, Rattle Brook, Star Lake, Wind Generation, Vale capacity assistance and Maritime Link Import (when applicable).
7. Adjusted for CBP&P and Vale and Praxair interruptible load, the impact of voltage reduction and Maritime Link Exports (when applicable).

Section 3

Island Peak Demand Information

Previous Day Actual Peak and Current Day Forecast Peak

Sat, Jan 13, 2018	Actual Island Peak Demand <sup>8</sup>	17:15	1,064 MW
Sun, Jan 14, 2018	Forecast Island Peak Demand		1,310 MW

- Notes:
8. Island Demand is supplied by NLH generation and purchases, plus generation owned and operated by Newfoundland Power and Corner Brook Pulp & Paper (Deer Lake Power, DLP).